

# DSL - ATA Installation Guide with a Modem Router Combo



Figure # 1 ATA Box



Figure # 2 Box Content



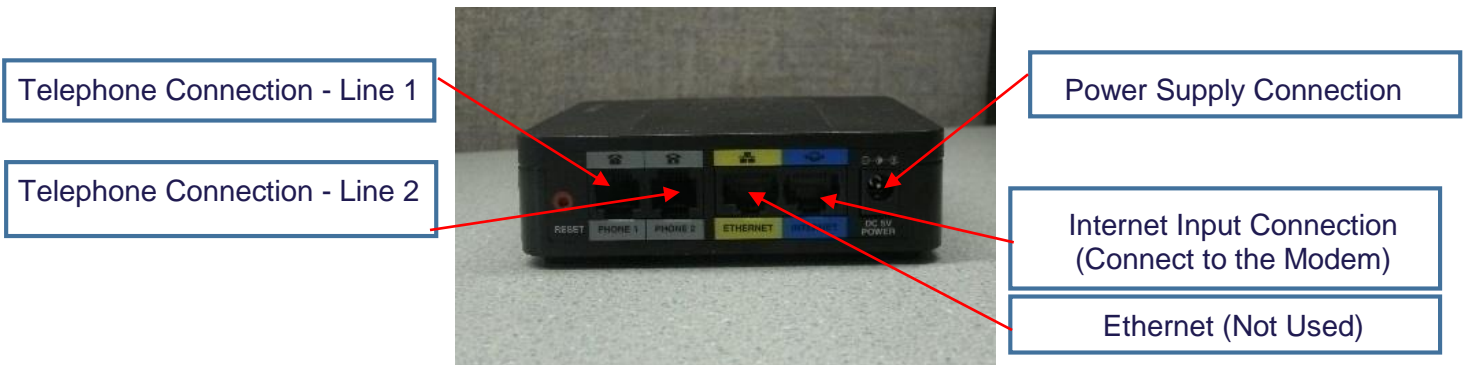
Figure #3 Power transformer

**Before beginning this Guide make sure that your modem is connected with a solid ADSL light**

**STEP 1** Make sure that you have all the content shown in Figure #2.

**STEP 2** Slide AC plug adapter onto transformer. As shown in Figure #3

Cisco – ATA



Cisco ATA Rear View

**STEP 3** Connect the internet input connection by inserting the Ethernet cable into the Internet Port (blue jack)



**STEP 4** Connect the other end of the Ethernet cable into port 4 of the modem (this is the closest to the grey port)

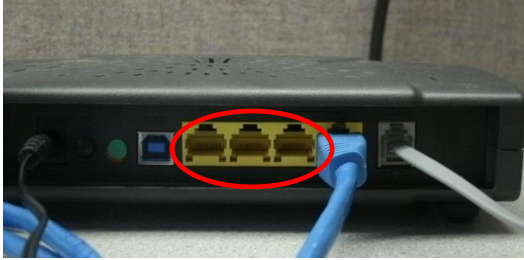


**IMPORTANT: The ATA will not work in any other port**

**STEP 5** Make power connection between the ATA and the power source.



**Step 6: Plug in any other internet device (computer,router, etc.) into ports 1, 2, or 3**



**Step 7: Plug you telephone into Telephone Phone 1.**



**Your set up will look similar to the figure below**



### Modem Lights

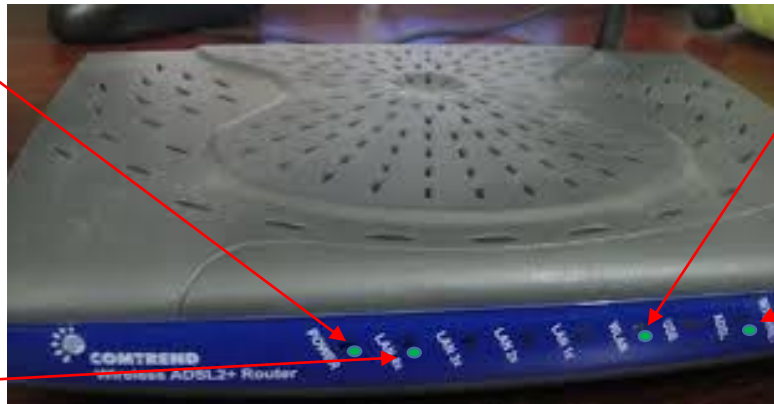
You will see at least the following lights on your modem

Power Light (on Solid )

WLAN (Wireless)

ADSL Light (on Solid )

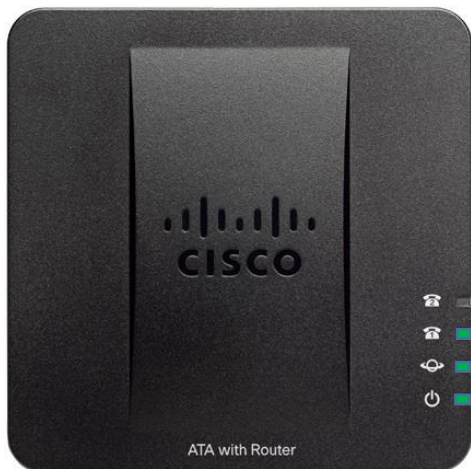
LAN 4X



The internet light, and LAN 3x, LAN 2X and LAN 1X may or may not be on but are not required for your telephone and internet to function properly.

### ATA Lights

You will see the following lights on your Cisco ATA



Telephone LED (Dial tone is present when solid green)

Internet LED (Internet is present when flickering green)

Power LED (Power is ON when solid green)

Once all of the connections have been made and the ADSL light on the modem is on solid the ATA will have the Power light on solid, the Internet light will come on and flicker, after approximately 3 – 5 minutes the Telephone LED light will come on solid. Congratulations your new phone system is now ready to use.

**For Questions or Help Call Technical Support at 800-516-5251**